





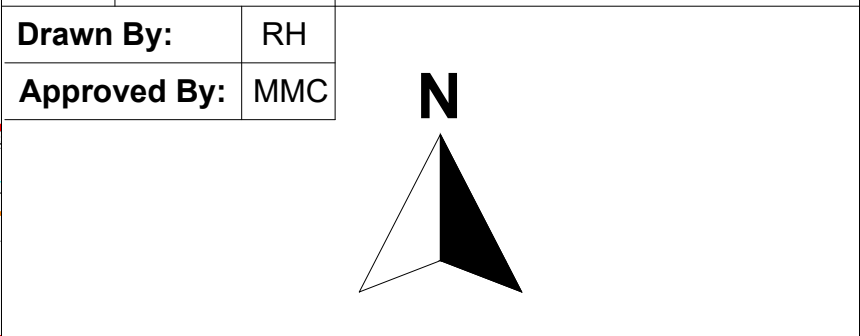
Label	Equipment Description	Notes
SA	Surge Arrester	All dimensions in meters unless otherwise noted. Do not scale from drawings, use figured dimensions only. Drawings based on OSI digital vector mapping for the area. License No: CYAL50408714 The Ballyloo Solar Farm and ancillary infrastructure shown outside of the Development Site Boundary does not form part of the SID application to An Coimisiún Pleanála and is shown here for reference purposes only. Drawings are for planning only and should not be used for detailed design. The detailed design will be subject to EirGrid approval based on their latest specification at the time, and equipment dimensions/sittings may vary once the exact specifications are determined. The 110kV AIS substation is based on EirGrid Drawing XDN-LAY-ELV-STND-H-013-R02
LCC	Local Control Cabinet	
DT/DEM	Transformer/Earth Disconnect	
VT	Voltage Transformer	
CT	Current Transformer	
CB	Circuit Breaker	Legend
LM	Lighting Mast	
LS	Lamp Standard	
BS	Busbar Support	
CSE	Cable Seal End	
TP	Telecoms Pole	Development Site Boundary
DG	Diesel Generator	
HOT	House Transformer	
NER	Neutral Earthing Resistor	
PI	Post Insulator	

Legend	
—	Development Site Boundary
—	Landowner Boundary
—	HV Underground Grid Connection Cable
Access Track	
Cut Area	
Fill Area	
Ballyloo Solar Farm Panels	
Site Notice Location	

Design Team	
Prepared By: Terra Solar Developments	Reviewed By: ARG Grid Solutions
	

Design Team	
Prepared By: Terra Solar Developments	Reviewed By: ARG Grid Solutions
	

Drawn By:	RH
Approved By:	MMC



Summary	
Project	Ballyloo Substation & Grid Connection
Location	Ballyloo, Co. Carlow
Title	Substation Option A - 110kV AIS Substation Site Layout Plan
Drawing Number	BYLOO-DR-002
Scale	1:500 @ A1
	Ballyloo Solar Farm Limited Commercial House Millbank Business Park Lucan Co. Dublin